

Dear Families,

**How will your child be assessed under the Australian Curriculum?**

**The Australian Curriculum in 2012**

The *Australian Curriculum* is currently being implemented in all Tasmanian schools for all children in Prep to Year 10. In 2012, your child is being taught English, Mathematics and Science using the new curriculum. This means that your child is being taught the same content and assessed against the same achievement standard as a child in the same year level in every other school in Australia.

**Changes to teaching and learning and assessment**

There are ongoing changes to the teaching and learning program in your child's classroom. There are also changes to the way that your child is assessed. The reports you receive in August and December will show your child's achievement using an A–E scale.

**The new assessment scale** - The A-E Achievement scale enables teachers to:

Use this letter	And this descriptor	To describe this achievement level
A	Well above the standard expected	The student has an <b>extensive</b> knowledge and understanding of the content and can <b>readily apply</b> this knowledge. In addition, the student has achieved a very high level of competence in the processes and skills and can <b>apply</b> these skills <b>to new situations</b> .
B	Above the standard expected	The student has a <b>thorough</b> knowledge and understanding of the content and a high level of competence in the processes and skills. In addition the student is able to <b>apply</b> this knowledge and these skills <b>to most situations</b> .
C	At the standard expected	The student has a <b>sound</b> knowledge and understanding of the main areas of content and has <b>achieved the expected</b> level of competence in the processes and skills.
D	Approaching the standard expected	The student has a <b>basic</b> knowledge and understanding of the content and has achieved a <b>basic level</b> of competence in the processes and skills.
E	Below the standard expected	The student has an <b>elementary</b> knowledge and understanding in few areas of the content and has achieved very <b>limited</b> competence in some of the processes and skills.

If your child is in Grade 3 to 6 their report will use the A to E and descriptor. If your child is in Prep, Year 1 or Year 2 you will only see the descriptor on the report. If they are in kinder they will be assessed against the Early Years Framework and the Kinder Check.

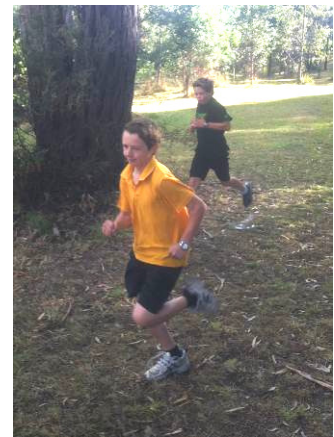
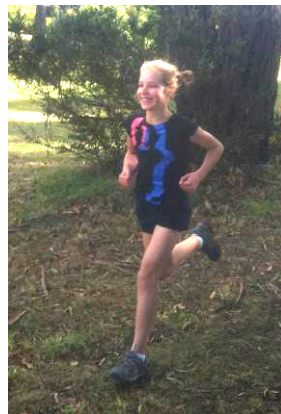
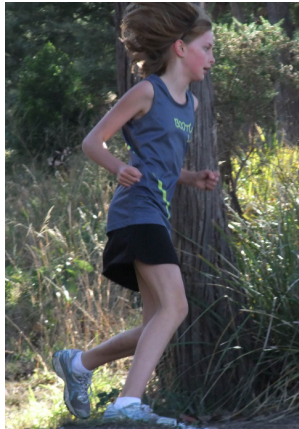
**Why is this happening?**

This new approach has been adopted to make reports simpler and assessments easier to understand. Other than that, the report you receive will be very similar to the one you received in the past. Comments will be written in plain language. The report will still give you information about your child's overall progress at school.

Cheers

**Anthony Burrows, Principal**

# Cross Country Photos



## Horse Riding Games

Last weekend Georgia McGrath and Austin Williams competed in the Southern Tasmanian Horse Games held at Pontville. Georgia placed 2nd (on her pony Lochie) in Division A and will now compete in Burnie at the State Horse Games Championships. Austin finished in 3rd place in Division B on his pony Sassy. Great work :)  
Tim Smith

## MS Mega Swim

Last Saturday several students and their parents were involved in the MS Mega Swim, the event involved 24 hours of continuous swimming at the Hobart Aquatic Centre. Our students were part of a team made up by the Kingston Beach Surf Lifesaving Club. Students swam in blocks of 200m, taking turns and broke it up at other times with some relays, the only rule being that someone must be swimming at all times. The event raises money and awareness of Multiple Sclerosis. Well done to the Raspin and Lohrey Families with Carol, Tyler, Josh, Philippa, Oliver and Sam all swimming. I hope I have not missed anyone out, but congratulations on a great effort. Tim Smith

## Touch Football State Trials

Congratulations to Ashton King who attended the Touch Football State team trials last weekend at Wentworth Park, Ashton has been asked to travel to Launceston to attend the final selection session in a few weeks time. Best of luck :) Tim Smith

## National Walk Safely to School Day (Friday 18<sup>th</sup> May)

is an annual initiative developed by the Council to encourage all primary school children to walk and commute safely to school.

## News for the Grade 3-4 & Grade 5-6 Netball Teams!

... We are having a "Pink" Fundraiser next Monday 14<sup>th</sup> May. Wear something pink and bring a small donation to raise funds for Breast Cancer Research! Gold coin for BBQ and Raffles after the games.

**Mother's Day Classic Walk/Run for Breast Cancer-** This Sunday 13<sup>th</sup> May. Go to [www.mothersdayclassic.org](http://www.mothersdayclassic.org) to register.

**City to Casino Fun Run** – Next Sunday 20<sup>th</sup> May. Go to [www.citytocasino.com.au](http://www.citytocasino.com.au) to download an entry form. It would be great to see many from our School Community at these great events.



In Science 1/2 WF have been studying insects and other mini-beasts found in the school grounds. We have observed and studied worms, slugs, snails and ants in detail. Students have also done their own research on an insect. Here are photos of some of the students at work.

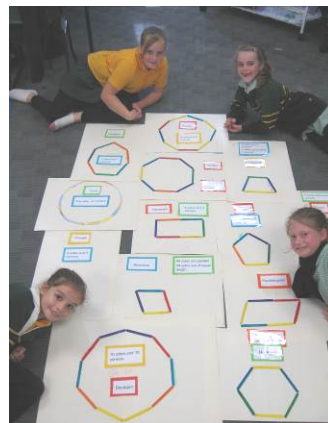


### 2-3 FALL/EDDLESTON SHAPE INVESTIGATION

In Maths, 2-3 F/E have been learning about shape and space and the differences between 2D and 3D shapes.

2D shapes have no depth but they do have corners and edges for example: a circle is a 2D shape because it has no depth and it is just round. But a sphere is 3D because it has depth. Bronte and Jasmine

"A piece of paper is a 2D shape because it has no depth. We looked for it and couldn't find it!"

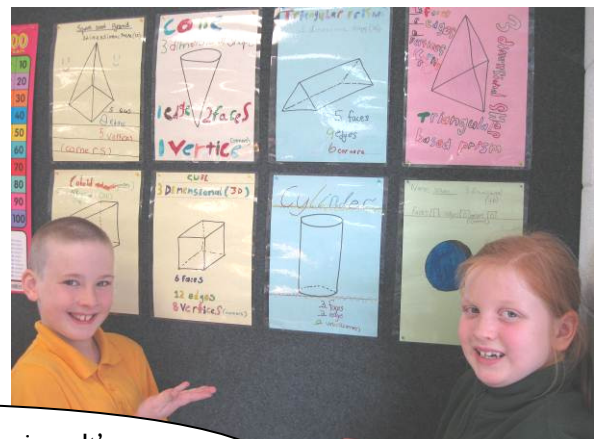


3D shapes are not the same as 2D shapes because 2D shapes are flat faced and 3D shapes have depth. 3D shapes are thick and 2D shapes are thin.

The words that we use in Maths time are faces, vertices (corners), and edges. Amy Lea and Jade



A 3D shape has depth and volume like a sphere. A cone is a 3D shape and a cylinder is a 3D shape. A square is not a 3D shape because a square does not have depth, but a cube does and is 3D. Jayden



The cupboard is a rectangular prism. It's 3D because it has depth. We found depth!

ERROR: undefined  
OFFENDING COMMAND: f'~

STACK: